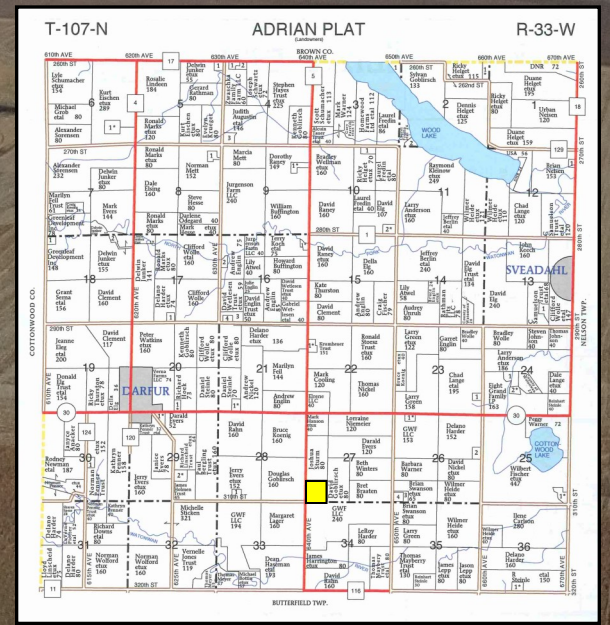
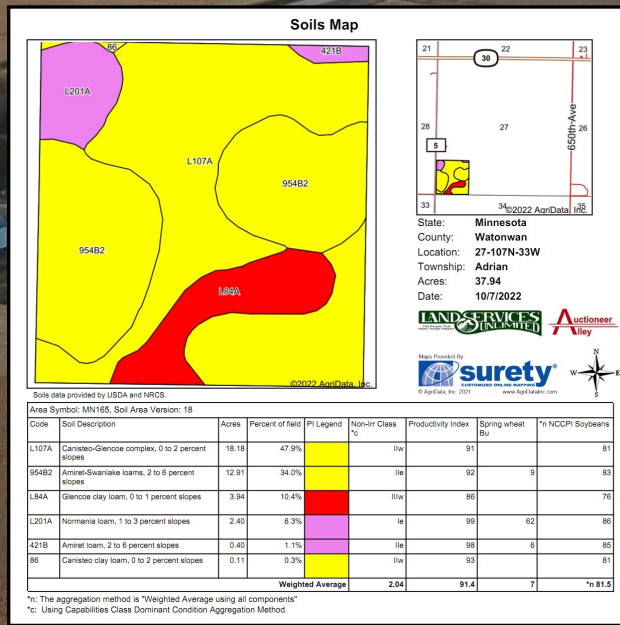


# 40 Acres +/- Bare Farmland in Adrian Twp, Watonwan Co., MN

# FARMLAND AUCTION

Tuesday, November 15, 2022 @ 10:00 AM

SALE LOCATION: Auction will be held at Darfur Community Hall 204 Adrian Street, Darfur, MN



PROPERTY LOCATION: From Darfur, MN: Go east 1 3/4 miles on State Hwy 30, then head south on Co. Hwy 5 for 3/4 miles.

PROPERTY LEGAL DESCRIPTION: 40 +/- Deeded Acres: SW 1/4 of the SW 1/4 in Section 27, Township 107 North, Range 33 West, Watonwan County, MN.

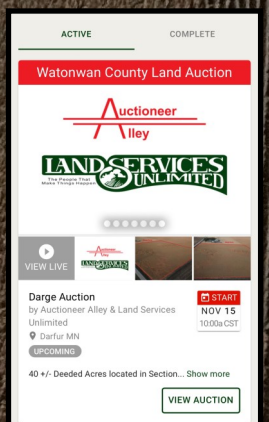
### AUCTION SALE TERMS:

The Darge farm will be offered for sale as one parcel on sale day. Please review farm booklet for specific details. All bidders must register for a bidding number prior to bidding on sale day. The successful buyer at the conclusion of the auction will enter into a purchase agreement & make a 20% earnest money down payment the day of the auction. The unpaid balance shall be due and payable in full on or before December 22, 2022, when clear title will be furnished. This sale is NOT CONTINGENT ON BUYER FINANCING and 20% down payment is NON-REFUNDABLE. There will be a 2% buyers premium added onto the final sales price at the conclusion of the auction. The property is being sold AS IS-WHERE IS. Property is being sold subject to any and all zoning, environmental, state, federal laws or any easements including road, drainage, utility, or other easements or agreements of record. The property is being sold subject to a 2022 crop lease. Sellers will keep all of 2022 farm rent and pay all of the 2022 real estate taxes. Any new assessments of record after the signing of the purchase agreement will be the responsibility of the buyer. Any appraisal or loan fees are buyer's obligation. It is the interested bidder's obligation to inspect the property prior to their purchase of it. For those that can't attend sale day and aren't able to bid online please make arrangements with sales staff 24 hours ahead of the auction to bid by phone. Any statements made at the auction may take precedence over any printed information. This sale is subject to the sellers approval. Auctioneer Alley, Land Services Unlimited+ & Sales Staff represent the sellers in this transaction.

### AUCTIONEERS NOTE:

Please come ready to purchase an excellent bare 40 acres of bare farmland just southeast of Darfur, MN. Auctioneer Alley and Land Services Unlimited are excited to be working with Darge Family during the sale process of their family farm. This is prime Watonwan County farmland with an excellent CPI of 91.4 and a sale you won't want to miss! This information provided by the sellers & their agents is believed to be correct, but is not guaranteed. Any lines on maps are for informational purposes only and are not guaranteed to be actual boundary lines of the property. The buyers shall make themselves familiar with the property and verify all information & data for themselves. This auction is open to the public and we look forward to seeing you there! Respectfully, Dustyn Hartung and Sales Staff.

**ONLINE BIDDING AVAILABLE  
THRU OUR MOBILE APP!**



## Owners: Joel & Carolyn Darge

### ADDITIONAL PROPERTY INFORMATION:

GO TO OUR WEBSITE AT [WWW.LANDSERVICESUNLIMITED.COM](http://WWW.LANDSERVICESUNLIMITED.COM) OR CALL DUSTYN HARTUNG 507-236-7629

# [www.auctioneeralley.com](http://www.auctioneeralley.com)

### AUCTIONEERS AND SALES STAFF

DUSTYN HARTUNG 507-236-7629

LEAH HARTUNG 507-236-8786

KEVIN KAHLER 507-920-8060

ALLEN, RYAN & CHRIS KAHLER

DOUG WEDEL & SCOTT CHRISTOPHER



105 S State Street, Fairmont, MN 56031-507-238-4318