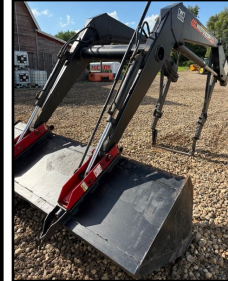


UPCOMING INTERNET ONLY AUCTION



ITEMS OPEN JULY 23RD AND CLOSE AUGUST 6TH

TRACTORS & MOWERS: JD 4250, PS, 6000 hrs; JD 5410 1400 hrs; IH 656 Gas Hydro 5200 hrs; IH 200 w/Fast Hitch & 2 bottom plow; IH Super C w/WF & Sickle Mower; IH Super H; JD 425 AWS & JD 185 Law Mowers. *All Tractors in very good condition. **SKID STEER:** Case 1816C w/ low hours **VEHICLES & CAMPER:** 1989 Chev Suburban Diesel, 120,000 miles; 1990 Ford Crown Vic 67,000 miles; Yamaha 4-250 4-Wheeler; Rolite 10' Trailer Camper; (2) Older pickup converted trailers **MACHINERY:** Lorenz 8001 3 pt. double auger, late model Snowblower, like new; Woods 84" HD Brush Cutter; Westendorf TA28 Loader, like new; SnoLander 3 pt. Snowblower; NI 208 Manure Spreader; BetterBilt liq. Manure spreader **ANTIQUES:** 2 row mounted IH Corn Planter; Potato Planter, pull type **TOOLS:** Large Anvil & Tools; Jet Mill-Drill & Jet Bandsaw, hardly used; Lincoln SP200 Wire Welder; Victor Torch & Tanks, like new; Uni Hydro Iron Worker; Hossfeld Metal Bander & Tooling; 20 Ton Press. **OPEN HOUSE:** Wednesday, July 30th 5-8PM or by appointment 507-920-8060 **OPEN HOUSE LOCATION:** 1936 60th Street, Fairmont, MN (Farm Shop) *All Items have been removed from Duane's Farm site. **NOTE:** We are honored to sell the remainder of Duane's very nice and unique equipment and tools for his family. Duane was an exceptional caretaker. *Full details & bidding at www.auctioneeralleylive.com

DUANE DALESKE ESTATE

Contact: 507-920-8060 or 507-238-4318 (o)

www.auctioneeralleylive.com

